



**Product: B6B LED**

The blue B6B LED is the next generation of beacons using LED technology. No need to worry about changing light bulbs on this beacon-the LEDs are rated at 50,000 hours of usage.

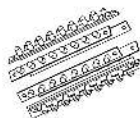
**Specifications:**

- Utilizes 56 blue LEDs (LED rating: 50,000 hrs.)
- 6 Operational modes selectable via dip switches
- 7 rotation speeds selectable via DIP switches
- Includes 3 built-in mounting plates to mount
- Dimensions (LxWxH): 6.25"x6.25"x7"/ 159x159x190mm
- Weight: 1.5 lbs./ .8 kg.

# American DJ® LED Beacon

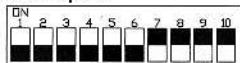
Thank you for purchasing the LED Beacon by American DJ®. You have either purchased the B6R LED (Red Beacon) or B6B LED (Blue Beacon). Please read the user instructions before using your new LED Beacon.

<b>Specifications:</b>	
Power Supply:	120V / 230V
Power Consumption:	25W Max
Weight:	1.85 lbs/0.84Kgs
Dimensions:	7.2" x 6.85" x 6.85"

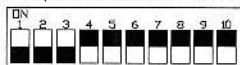


← 8 Rows of LED's

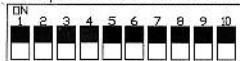
Dipswitches 1 - 7 allow you to control the rotation speed. When dipswitches 1-6 are in the Off position and dipswitch 7 is in the On position, the rotation speed will be at the maximum speed



When dipswitches 1-3 are all in the Off position, and dipswitches 4-7 are in the On position, the rotation speed will be at medium speed.

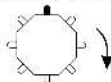
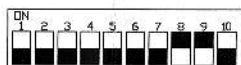


When dipswitches 1-7 are all in the On position, the rotation speed will be at the slowest.

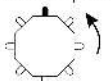
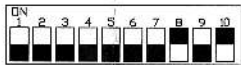


Dipswitches 8 - 10 allow you to select a program and the rotation direction.

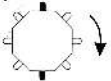
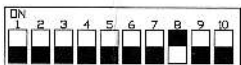
For single bar clockwise rotation put dipswitches 8 & 9 in the On positions and dipswitch 10 in the Off position.



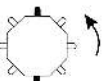
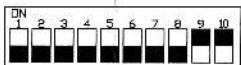
For single bar counter clockwise rotation put dipswitches 8 & 10 in the On positions and dipswitch 9 in the Off position.



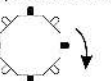
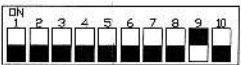
For two opposite rows clockwise rotation put dipswitch 8 in the On position and dipswitches 9 & 10 in the Off positions.



For two opposite rows counter clockwise rotation put dipswitches 9 & 10 in the On positions and dipswitch 8 in the Off position.



For four opposite rows clockwise rotation put dipswitch 9 in the On position and dipswitches 8 & 10 in the Off position.



To turn all LED's full on put dipswitch 10 in the On positions and dipswitches 8 & 9 in the Off position.

To turn all LED's off dipswitches 8, 9, & 10 must be either in the On or Off positions.